



"Shorelines just got safer with Coastal Risk"
- American Business Awards

WWW.COASTALRISKCONSULTING.COM
844-SEA-RISE (732-7473)



OUR MISSION

Coastal Risk's mission is to help billions of coastal residents in the U.S. and around the world, and the businesses and governments that serve them, get "Climate Ready and Storm Safe". Using cloud-based, geospatial data and analytics, our comprehensive climate impact vulnerability assessments (tides, storm surges, and heavy rainfall), have revolutionized flood prediction modeling.



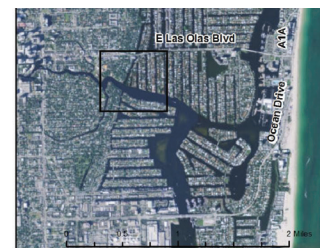
CONSUMER



GOVERNMENT



BUSINESS



Coastal Risk Rapid Assessment™
516 Mola Ave., Fort Lauderdale, FL

**Tidally-influenced
flooding up to
8 inches up to
45 days per year**

2025

FEATURED IN

**South Florida
BUSINESS JOURNAL**

**Harvard
Business
Review**

theguardian

CLIMATE CHANGE BUSINESS JOURNAL™

VANITY FAIR

The Miami Herald

**BROWARD PALM BEACH
NewTimes**

REUTERS

**The Philadelphia
Inquirer**

SunSentinel

**Clean
Technica**



AWARDS & RECOGNITION



American Business Awards
"Tech Startup of the Year" 2016



American Business Awards
"Startup of the Year" 2016

**BROWARD PALM BEACH
NewTimes**

Broward Palm Beach New Times
"3rd Coolest Startup" 2016



"Miami Herald Business
Plan Finalist" 2015



"Smart City Startups
Finalist" 2015



"Global Impact Competition
Finalist" 2015



ONLINE PRODUCTS

www.floodscores.com

- **FIRST Score™:** Coastal climate impact risk assessment including days of tidal flooding over the next 30 years, storm surge heights, and six additional climate risk categories.
- **Coastal Risk Rapid Assessment™:** FIRST Score™ report plus detailed aerial maps and GIS analyses of tidal/sea level rise, storm surge and heavy rainfall flooding (where, when and how deep).

LEADERSHIP

MANAGEMENT TEAM:

Albert Slap, Founder and President
Rajiv Krishnan, CFO
Jon Waddell, CTO
Robert Hubbell, VP-Sales & Marketing

SCIENTIFIC TEAM:

Dr. Leonard Berry, VP & Co-Founder
Dr. Brian Soden, VP-Science & Technology
Dr. Keren Bolter, Science Director

OUR PARTNERS



IBM



Tetra Tech



InterNachi



Trexin

CLIENTS AND PROJECTS



Military
Airfield



2 Nuclear
Power Stations



Scores of
Coastal Properties